



# ALPHAMECH

Engineering Services Private Limited

## COMPANY PROFILE

---







# CONTENT

## WHO WE ARE

- INTRODUCTION
- BACKGROUND
- VISION-MISSION-GOAL-CORE VALUE

## WHAT WE DO

- HEATING, VENTILATION & AIR CONDITIONING
- ELECTRICAL LOW VOLTAGE
- PLUMBING
- FIRE FIGHTING
- MAINTENANCE
- PROJECT MANAGEMENT
- PROJECT COST MANAGEMENT

## HOW WE DO

- PROJECT MANAGEMENT
- PROJECT CONTROL
- HEALTH SAFETY POLICIES
- ORGANIZATIONAL CHART
- GOVERNMENT COMMERCIAL REGISTERS



# A MESSAGE FROM OUR CEO

## OUR COMMITMENT TO YOU

Dear Valued Customers,

I am pleased to connect with you and share a glimpse into the heart of ALPHAMECH Engineering Services Private Limited. At the core of our ethos is a resolute commitment to providing you with unparalleled products/services and an exceptional customer experience.

As the CEO of ALPHAMECH Engineering Services Private Limited, I assure you that we are unwavering in our dedication to innovation, quality, and customer satisfaction. Every decision we make is rooted in the understanding that your trust is our most valuable asset.

We believe in not just meeting but exceeding your expectations. Our team is driven to deliver solutions that resonate with your needs and elevate your experience. We are constantly refining our processes, embracing new technologies and listening attentively to your feedback to ensure we are always in tune with your evolving requirements.

Our journey is guided by transparency integrity, and a deep sense of responsibility. We understand that in a dynamic business landscape, your success is intricately linked with ours. Therefore, we consider ourselves not just service providers but partners in your growth.

Thank you for choosing ALPHAMECH Engineering Services Private Limited. We are excited about the future and the future and the opportunity to continue serving you with excellence.



**ENGR. ABID ALI**

CEO, ALPHAMECH ENGINEERING SERVICES PRIVATE LIMITED

*"Our mission is to serve our customers  
and  
protect environment through  
environmentally friendly  
Operation and Services"*



# INTRODUCTION

ALPHAMECH Engineering Service (Private) Limited is a Mechanical, Electrical and Plumbing contracting company in Pakistan specializing in supply, installation services, maintenance of Central HVAC system and Allied Mechanical services. Our scope covers Engineering Documentation, Submittals Approval, Shop drawings, Coordinating Drawings, Commissioning Start-Up, As-Built to Contract Programs, Project Time Schedules, Complying Consultant Specifications, International Standards & Codes, Safety & Quality Plans.

Our business activity extends to cover all areas of electro-mechanical works including but not limited to

- HEATING, VANTILATION & AIR CONDITIONING
- MECHANICAL WORKS
- FIRE FIGHTING
- DUCTING & THERMAL INSULATION WORKS
- PIPING & PLUMBING WORKS
- INDUSTRIAL INSTALLATION WORKS

ALPHAMECH Engineering Service (Private) Limited works with the highest efficiency and in accordance with the latest technologies in conformity with international standards of quality security and safety. We utilize trained and experienced staff for the implementation and delivery of projects with commitment to contract terms, conditions, and preservation to the environment

- INDUSTRIAL & FACTORIAL
- TRADE CENTERS & MALLS, HYPER
- SITES & OPEN AREAS
- ADMINISTRATIVE & ORGANIZATIONS
- GOVERNMENTAL & PUBLIC
- TOURISTIC & HOTELS RESORTS
- EDUCATIONAL & CULTURAL
- RESIDENTIAL & HOUSING
- COMMERCIAL & BUSINESS
- FAST MOVING CONSUMER GOODS

We execute all projects in accordance with technical and financial strategies to fit the distinctive character of the construction projects and to achieve the maximum benefit for our customers.



## BACKGROUND

ALPHAMECH Engineering Service (Private) Limited is a major player in HVAC & Allied Mechanical services fields has a good profile for Supplies and Turnkey Projects and well-known customers in the Pakistan market. The company has a team of highly qualified and experienced professional engineers, who are dedicatedly performing their services on various projects throughout Pakistan.

Our Primary purpose is to complete the supply, installation, service and upgrade chains in the HVAC & Allied Mechanical services fields. With our staff experience and technical know-how.

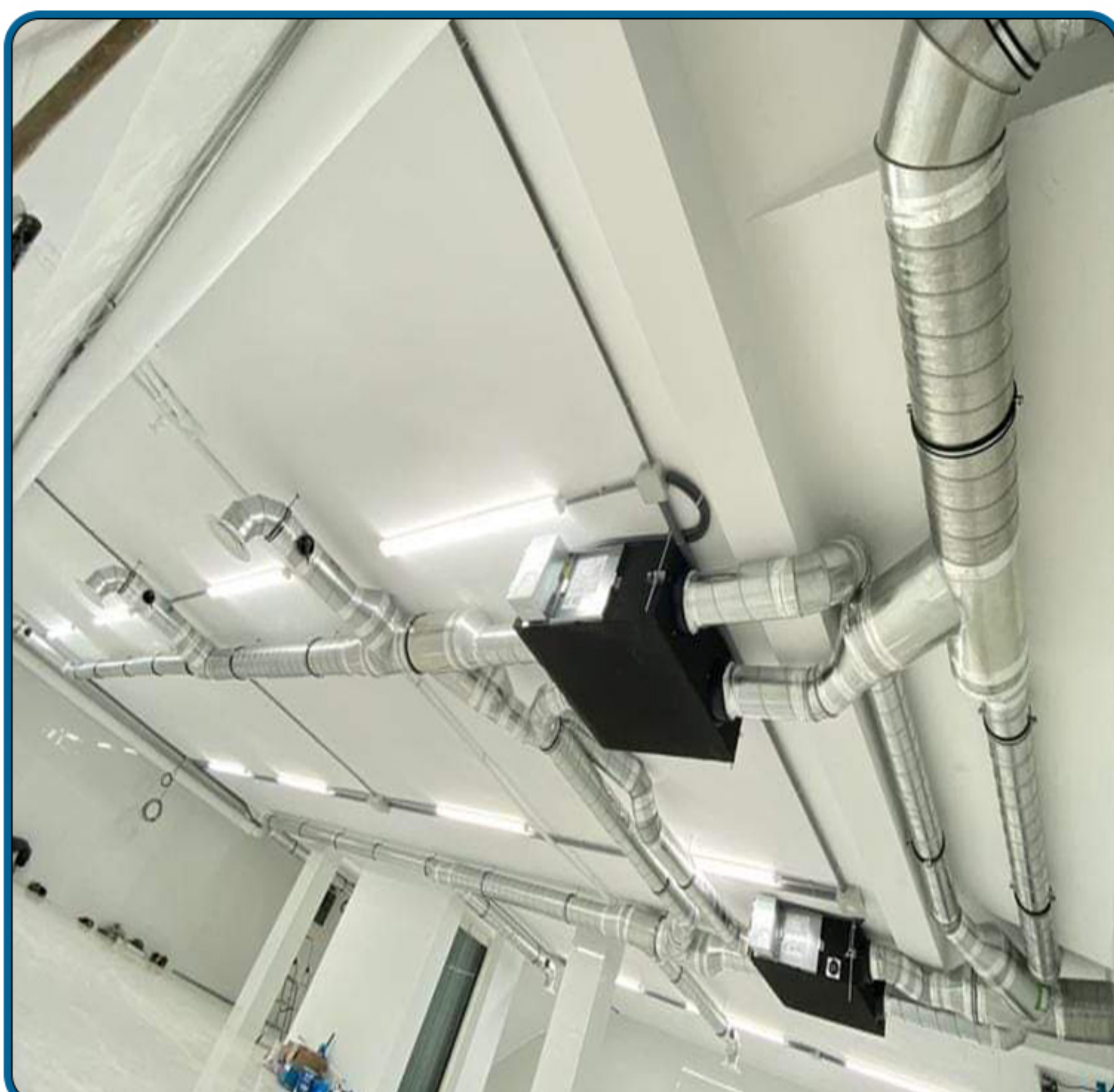
ALPHAMECH Engineering Service (Private) Limited enjoys a strong presence on various markets in:

- CONTRACTING
- SERVICES
- MAINTENANCE
- TRADING
- MANUFACTURING
- DEVELOPEMENT

Within a very competitive position, this is the result of high efficiency and full autonomy in phases

- PLANNING COORDINATION
- ENGINEERING PERSONALITY
- QUALITY CONTROL
- AFTER SALE SERVICES

Every day, ALPHAMECH Engineering Service (Private) Limited offers (Optimum & Economical) Quotes to its customers, required for MEP Services & Solutions according to approved standards and an ever-wider range of Products & Services.







## VISION

To become one of the leading and most reliable MEP contracting companies in Pakistan.



## MISSION

Guided by our vision we shall deliver high-quality, cost-effective projects on schedule and enhance our client's satisfaction through continuous improvement of our business practices in terms of safety, quality, service delivery as well as sound environmental awareness policies.



## GOAL

To Focus on SWOT Day by Day To grow the business



## CORE VALUES

Clients come back to us because we are flexible and transparent in our approach

### **WE HAVE THE EXPERIENCE**

We have year's history business to business markets. We therefore understand B2B markets better than anyone else- we are the B2B experts.

### **WE HAVE THE KNOWLEDGE**

Knowledge is the foundation upon which every decision is made – nobody understands that better than us. We gather information and are 'translators of knowledge' for our clients, which in turn enables them to make strategic, tactical moves with confidence.

### **WE ARE COMMITTED TO YOU**

We do everything with our clients in mind. If you work with B2B we will help you to do better business in the future



A photograph of industrial HVAC equipment, including large blue pipes and machinery, set against a blue background with a white curved shape.

## HEATING VENTILATION AIR CONDITIONING

We provide supply, installation, maintenance and repairing climate-control systems in Industrial & Factorial, Trade Centers & Malls, Hyper, Sites & Open Areas, Administrative & Organizations, Governmental & Public, Touristic & Hotels, Resorts, Educational & Cultural, Residential & Housing, Commercial & Businesses, Sports & Clubs. Providing thermal comfort and maintaining good indoor air quality is our main purpose.

ALPHAMECH Engineering Service strives to supply & installation systems with the perfect quality-cost balance that successfully provides superior air quality while incurring low energy costs and allowing easy maintenance.

What sets us apart is that our team undergoes continuous follow blueprints and specifications for installation, inspect extensive training that is unmatched in the industry. We and maintain systems, install controls, test individual parts, and replace worn-out components.

- CHILLED WATER SYSTEMS
- DX / VRV SYSTEMS
- VENTILATION SYSTEMS
- FRESH AIR HANDLING UNITS
- PACKAGE UNITS
- ECOLOGY UNITS AND MAKE UP AIR HANDLING UNITS
- GI AND PIR DUCTING
- AIR BALANCING SYSTEM & CERTIFICATIONS
- WATER BALANCING SYSTEM & CERTIFICATIONS
- CENTRIFUGAL & INLINE PUMPS
- PROCESS WATER SYSTEM
- COOLING TOWER SYSTEM
- COOLING & HEATING INSULATION
- EXTRACT FANS
- ABSORPTION & ELECTRICAL SYSTEM
- ANNUAL MAINTENANCE CONTRACT
- BOILER SYSTEM
- HEATING & COOLING COILS
- COMPRESSED AIR SYSTEM
- HUMIDIFICATION & DEHUMIDIFICATION





## ELECTRICAL ( LOW VOLTAGE )

Low voltage systems that distribute power where is needed, safely and reliably, while providing optimal protection for personnel and equipment. Our range of low voltage distribution elements includes:

- GROUNDING
- MAIN DISTRIBUTION BOARDS (MDB)
- SECONDARY MAIN DISTRIBUTION BOARDS (SMDB)
- FINAL DISTRIBUTION BOARDS (FDB)
- CABLES
- LIGHTING FIXTURES & SOCKETS

## PLUMBING

ALPHAMECH Engineering Service Private Limited puts lots of emphasis to ensure that every plumbing system installed is equipped with well sized and securely connected pipe, drain fittings, valves, valve assemblies and devices for the proper distribution of water.

The plumbing systems that We specializes in:

- SANITARY AND DRAINAGE SYSTEMS
- WATER DISTRIBUTION
- WATER TREATMENT
- KITCHEN AND LAUNDRY PLUMBING
- SAND TRAPS AND GREASE TRAPS
- VARIABLE AND FIXED SPEED PUMPING SYSTEMS



## FIRE FIGHTING

The reliable protection systems we install have one main purpose which is to prevent the interruption of services necessary for the public welfare and avoid area wide conflagration, all the while putting the safety of life at utmost priority

- FIRE SUPPRESSION SYSTEMS
- FIRE EXTINGUISHERS
- FIRE HOSE REELS
- FIRE HYDRANT SYSTEMS
- AUTOMATIC SPRINKLER SYSTEMS
- DRY AND WET RISER

## MAINTENANCE

ALPHAMECH Engineering Services Private Limited provides Preventive, corrective and predictive maintenance of all HVAC equipment including single maintenance & annual maintenance.

The meticulous management of HVAC (Heating, Ventilation, and Air Conditioning) equipment encompasses a comprehensive approach to maintenance, incorporating Preventive, Predictive, and Corrective strategies. Preventive maintenance involves systematic tasks such as the routine cleaning or replacement of air filters, meticulous inspection, and lubrication of moving components, and precise calibration of controls. These proactive measures aim to forestall potential issues, curbing energy consumption and optimizing operational efficiency. The integration of Predictive maintenance employs advanced diagnostics and monitoring technologies to anticipate and address issues before they manifest, enhancing the reliability and longevity of HVAC systems.

Furthermore, Corrective maintenance comes into play when issues are identified, involving prompt and precise corrective actions to rectify problems and minimize operational downtime. The Annual Maintenance, a pivotal aspect of this multifaceted approach, serves as a structured platform for executing these strategies, providing an opportune moment for comprehensive examinations and fine-tuning. This disciplined approach not only ensures peak performance but also translates into reduced utility costs, demonstrating a tangible commitment to environmental sustainability. In essence, the incorporation of Preventive, Predictive, and Corrective maintenance strategies into HVAC equipment upkeep is





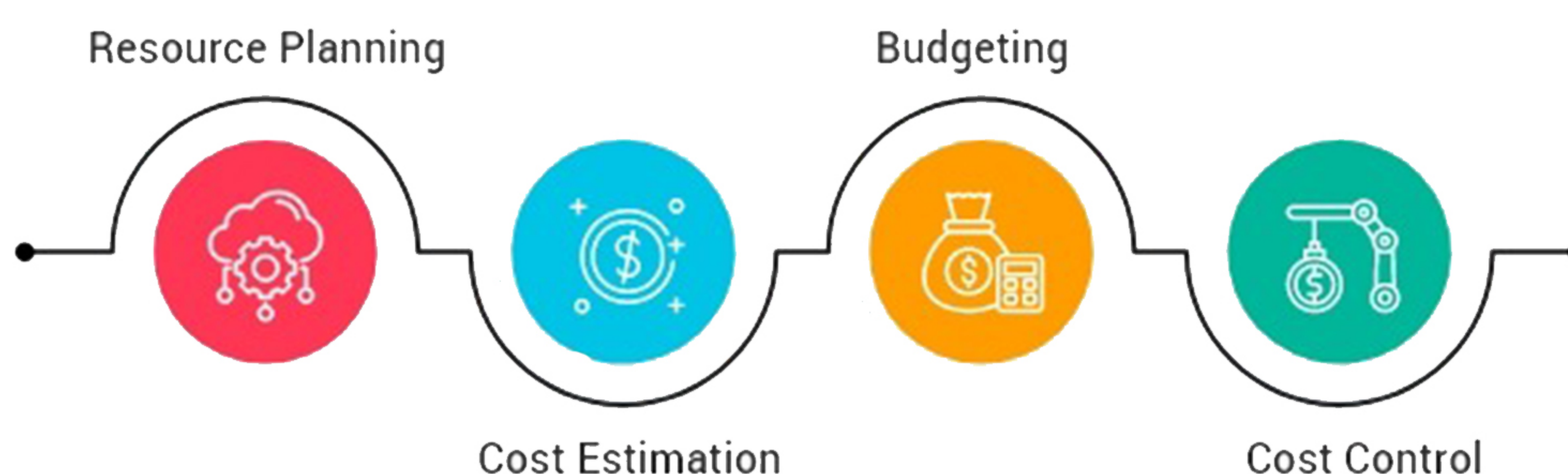
## PROJECT MANAGEMENT

ALPHAMECH Engineering Services Private Limited maintains a commitment to excellence in project management by adhering to the rigorous standards set by the Project Management Professional (PMP). Our projects are systematically managed through the various phases of the Project Management Life Cycle, including initiation, planning, execution, monitoring and controlling, and closing. This structured approach allows us to ensure quality standards and deliver successful outcomes in accordance with industry best practices

## PROJECT COST MANAGEMENT

ALPHAMECH Engineering Services Private Limited Engineering estimation in HVAC involves assessing project requirements, conducting load calculations, designing HVAC systems, selecting equipment, and creating a comprehensive Bill of Materials. The process includes estimating labor installation, and additional costs, incorporating a contingency factor for unforeseen circumstances. Thorough documentation is crucial, outlining the design, specifications, and cost breakdown.

The estimation undergoes review by experienced HVAC engineers for accuracy, and the finalized estimate is presented to stakeholders. Continuous collaboration and communication are essential throughout this iterative process to ensure a successful and cost-effective implementation of the HVAC system.







## HEALTH & SAFETY POLICY

---

In prioritizing the well-being of our employees, our company is dedicated to maintaining a safe and healthy workplace. We encourage everyone to be vigilant about potential hazards, fostering a culture where employees feel empowered to identify and report safety concerns. Clear emergency procedures, including evacuation plans and first aid availability, are in place to ensure a prompt and effective response in case of unforeseen events. The use of personal protective equipment (PPE) is mandatory for specific tasks, and the company is committed to providing the necessary equipment. Additionally, our policies address ergonomic considerations, fire and electrical safety, proper handling of chemicals, and compliance with all relevant health and safety laws and regulations. Regular training sessions and inductions equip employees with the knowledge needed to navigate their roles safely. We value continuous improvement regularly reviewing our health and safety policies to adapt to changes in our work environment and to uphold the highest standards of employee well-being.

To reinforce these commitments, our employees are urged to actively participate in creating a secure workplace. Open communication about discomfort or ergonomic issues is encouraged and reporting accidents or incidents is mandatory for swift resolution and prevention of future occurrences. Our policies are not static; they undergo regular reviews to ensure their ongoing effectiveness and compliance with legal requirements. By adhering to these simple yet comprehensive guidelines, we aim to create a workplace where safety is ingrained in our daily operations, fostering a culture of well-being and responsibility.





## PROJECT MANAGEMENT AND EXECUTION

### Project Planning:

- Develop a comprehensive project plan outlining timelines, milestones, and resource allocation.
- Define roles and responsibilities within the project team.

### Quality Assurance:

- Establish quality control measures throughout the project lifecycle.
- Conduct regular inspections and testing to ensure adherence to design specifications and industry

### Procurement and Supply Chain Management:

- Efficiently manage the procurement of HVAC equipment and materials.
- Establish relationships with reliable suppliers to ensure timely delivery and quality assurance.

### Installation and Commissioning:

- Ensure proper installation of HVAC systems by qualified technicians.
- Conduct thorough commissioning to verify that all components are functioning according to design specifications.

### Risk Management:

- Identify potential risks and develop mitigation strategies.
- Regularly assess and update risk management plans throughout the project.

### Communication and Collaboration:

- Foster open communication channels within the project team and with stakeholders.
- Collaborate closely with architects, builders, and other relevant parties to ensure alignment with overall project goals.

## PROJECT CONTROL

### Budget Management:

- Implement robust financial controls to monitor project costs.
- Track expenditures against the budget and adjust as necessary.

### Timeline Adherence:

- Utilize project management tools to monitor and control project timelines.
- Implement strategies to address any delays promptly.

### Change Management:

- Establish a formal change management process to handle modifications to the project scope.
- Clearly communicate changes and their impact on timelines and budgets.

### Performance Monitoring:

- Implement Key Performance Indicators (KPIs) to monitor the performance of HVAC systems.
- Regularly assess and report on the efficiency and effectiveness of the installed systems.



# PROFESSIONAL STATEMENTS

## **Quality Assurance Statement:**

ALPHAMECH Engineering Services is committed to delivering HVAC solutions of the highest quality. Our rigorous quality assurance processes, from project initiation to completion, ensure that each system meets or exceeds industry standards and client expectations.

## **Project Execution Commitment:**

We pledge to execute HVAC projects with precision and efficiency. Our dedicated project management team meticulously plans, monitors, and adjusts throughout the project lifecycle to ensure timely and successful delivery.

## **Client Communication Commitment:**

Open and transparent communication is at the core of our approach. ALPHAMECH is dedicated to keeping clients informed at every stage of the project, fostering collaboration and building trust throughout the entire process.

## **Continuous Improvement Statement:**

ALPHAMECH Engineering Services is dedicated to continuous improvement. We actively seek feedback, analyze project outcomes, and invest in ongoing training and development to stay at the forefront of HVAC technology and project management practices.

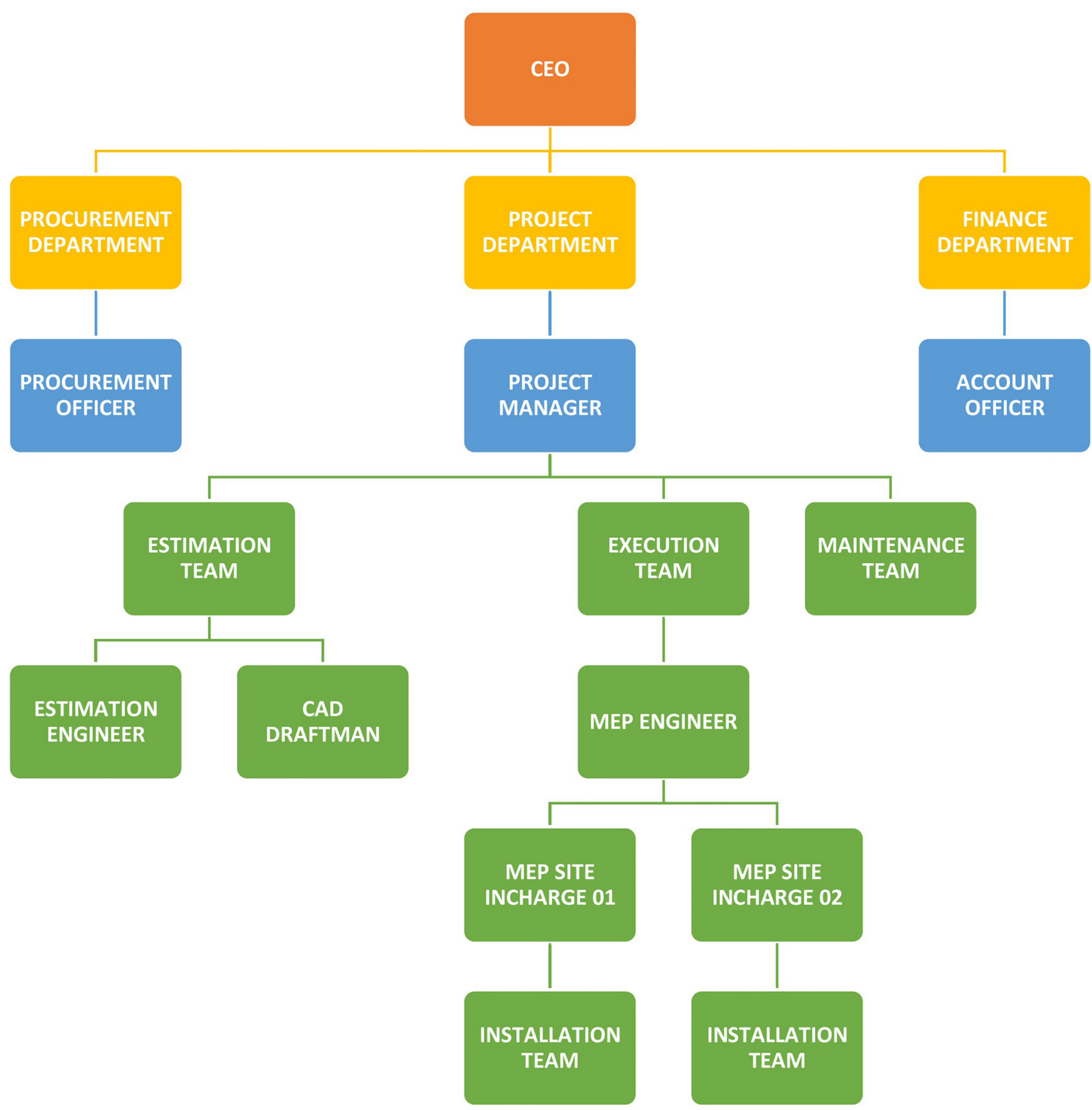
By integrating these elements into their approach, ALPHAMECH Engineering Services can enhance their reputation for delivering high-quality, efficiently executed HVAC projects while maintaining a strong commitment to professionalism and client satisfaction.







# ORGANIZATIONAL CHART





## CERTIFICATES



ALPHAMECH Engineering Services Private Limited holds certifications and membership in concern organisations to work smoothly in every HVAC-MEP & Mechanical projects





## CONTACT US :



+ 92 333 7233342



info@ames.com.pk



Office # A-46 Karachi Bar Association Cooperative  
Housing Society Sector 25\A Scheme 33 Karachi



www.ames.com.pk